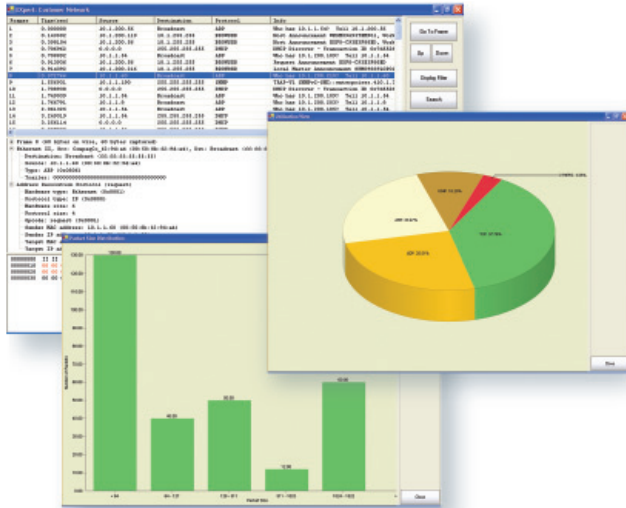


EXpertNPA

NETWORK TESTING—TRANSPORT AND DATA COM



A simple, powerful tool for detailed network problem identification and characterization

- Quick and easy identification of network problems by capturing, filtering and decoding Ethernet and higher-layer traffic
- Display of traffic statistics in a contextual way in order to facilitate network troubleshooting
- Detailed user-definable reports including graphics
- Even more powerful tool when used in conjunction with EXFO's FTB-8510B
- Packet Blazer Ethernet Test Module

Providing In-depth Ethernet Network Analysis

Networks and their related field-testing requirements are becoming increasingly sophisticated. Many service providers are offering fully managed services and require more in-depth analysis when problems occur. EXFO's EXpertNPA Network Protocol Analyzer software is a simple and powerful tool that enables identification and detailed assessment of complex network problems. EXpertNPA supports a wide range of key applications including the following:

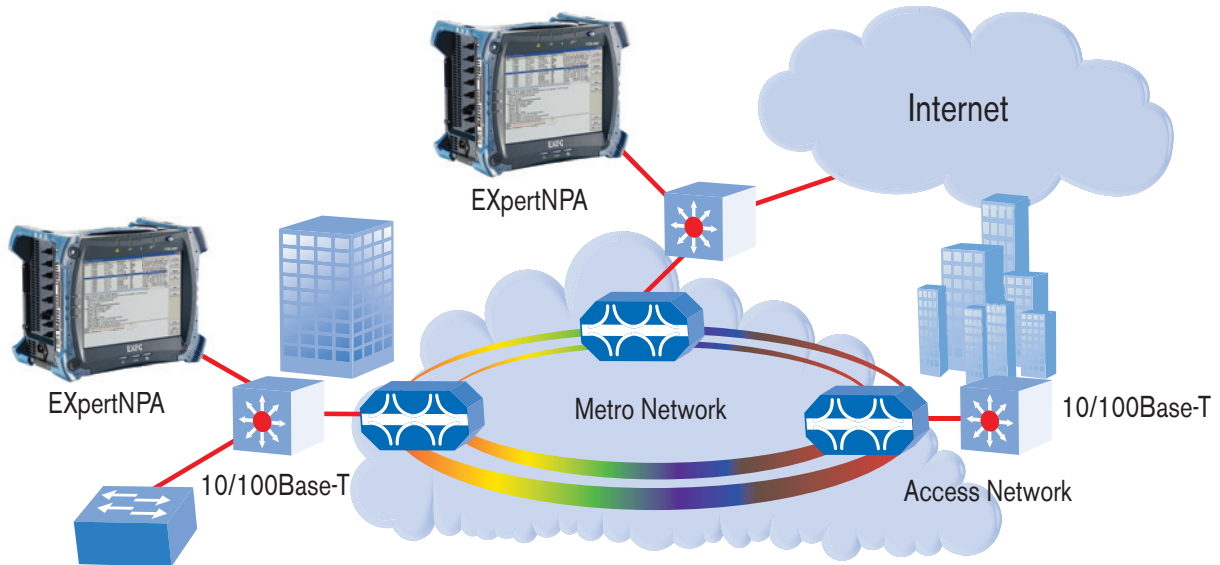
- Determining the baseline trend of network bandwidth utilization
- Identifying the network top talkers
- Identifying the source and cause of broadcast storms
- Identifying the source of network overload troubles
- Identifying the source of network attacks



Key Features

- Three-pane view displaying the frame list, complete frame decodings and Hex information
- User-definable reports available in PDF, HTML and Excel formats
- Detailed statistics presented in a contextual manner allowing easy network problem analysis (graphical and tabular displays)
- Advanced, pre-configured and user-definable capture and display filters
- Intuitive, easy-to-use touchscreen-adapted interface
- Integrated into EXFO's FTB-500 portable platform or installed on any Windows-based computer
- Hundreds of protocol decodings

For most applications, tests are performed by connecting EXpertNPA to a switch/router mirrored port in the network. Doing so allows the user to easily select the portion of the network to be analyzed. Troubleshooting can be performed on customer (LAN) or service provider (WAN) traffic.



The Powerful Packet Blazer/EXpertNPA Combination

Combining the FTB-8510B Packet Blazer Ethernet Test Module with EXpertNPA Network Protocol Analyzer software generates very powerful testing capabilities. This arms service providers with a complete tool set for turn-up and troubleshooting of Ethernet services. When used in conjunction with the Packet Blazer, EXpertNPA software enables the customer to perform deeper network traffic analysis without the need for a second test instrument.



ORDERING INFORMATION

EXPERT

- **EXPERT** EXpertNPA Network Protocol Analyser Software
Provided on CD
- EXPERT-USB** EXpertNPA Network Protocol Analyser Software
Provided on USB Memory stick and CD

ACCESSORIES

GP-2002	USB memory stick (256 MB)
GP-298	PCMCIA Gigabit Ethernet LAN (10/100/1000 Mb/s)

SYSTEM REQUIREMENTS

Minimum recommended disk space: 100 MB
 Operating systems: Windows 2000 and XP
 Recommended processor: Pentium II (333 MHz) with 512 MB RAM

EXFO Corporate Headquarters > 400 Godin Avenue, Quebec City (Quebec) G1M 2K2 CANADA | Tel.: +1 418 683-0211 | Fax: +1 418 683-2170 | info@EXFO.com

Toll-free: +1 800 663-3936 (USA and Canada) | www.EXFO.com

EXFO America	3701 Plano Parkway, Suite 160	Plano, TX 75075 USA	Tel.: +1 800 663-3936	Fax: +1 972 836-0164
EXFO Asia	151 Chin Swee Road, #03-29 Manhattan House	SINGAPORE 169876	Tel.: +65 6333 8241	Fax: +65 6333 8242
EXFO China	Beijing New Century Hotel Office Tower, Room 1754-1755 No. 6 Southern Capital Gym Road	Beijing 100044 P. R. CHINA	Tel.: +86 (10) 6849 2738	Fax: +86 (10) 6849 2662
EXFO Europe	Omega Enterprise Park, Electron Way	Chandlers Ford, Hampshire S053 4SE ENGLAND	Tel.: +44 2380 246810	Fax: +44 2380 246801
EXFO Service Assurance	285 Mill Road	Chelmsford, MA 01824 USA	Tel.: +1 978 367-5600	Fax: +1 978 367-5700

EXFO is certified ISO 9001 and attests to the quality of these products. This device complies with Part 15 of the FCC Rules. Operation is subject to the following two conditions: (1) this device may not cause harmful interference, and (2) this device must accept any interference received, including interference that may cause undesired operation. EXFO has made every effort to ensure that the information contained in this specification sheet is accurate. However, we accept no responsibility for any errors or omissions, and we reserve the right to modify design, characteristics and products at any time without obligation. Units of measurement in this document conform to SI standards and practices. In addition, all of EXFO's manufactured products are compliant with the European Union's WEEE directive. For more information, please visit www.EXFO.com/recycle. Contact EXFO for prices and availability or to obtain the phone number of your local EXFO distributor.

For the most recent version of this spec sheet, please go to the EXFO website at <http://www.EXFO.com/specs>

In case of discrepancy, the Web version takes precedence over any printed literature.